

Date, Time: 06/02/2006, 1000

HARDWARE & SOFTWARE

HP LaserJet 2300 – Initially out of order [fixed at 1330]

hscclient03 on PUBLICRACX05 frequently freezes [did NOT turn on]

hscclient04 on PUBLICRACX05 **VERY SLOW**

Microsoft Windows 2000 Version 5.0 [Build 2195: Service Pack 4]

Microsoft Word 2002 [10.6764.6735] SP3

hscclient05 on PUBLICRACX?? [did NOT check]

hscclient06 on PUBLICRACX03 Initially, Protocol Driver Error [OK]

At 1330 Mike Gaul discovered cable to wall was unplugged; he plugged it in

Microsoft Windows 2000 Version 5.0 [Build 2195: Service Pack 4]

Microsoft Word 2002 [10.6764.6735] SP3

hscclient07 on PUBLICRACX05

Microsoft Windows 2000 Version 5.0 [Build 2195: Service Pack 4]

Microsoft Word 2002 [10.6764.6735] SP3

hscclient08 on PUBLICRACX?? [did NOT check]

hscclient09 on PUBLICRACX06

Microsoft Windows 2000 Version 5.0 [Build 2195: Service Pack 4]

Microsoft Word 2002 [10.6612.6626] SP3

Unable to access Removable Disk [NO C\$ on 'Client' [U:]/Hard Disk/]

hscclient10 on PUBLICRACX05

Microsoft Windows 2000 Version 5.0 [Build 2195: Service Pack 4]

Microsoft Word 2002 [10.6764.6735] SP3

Multiple Citrix Terminals

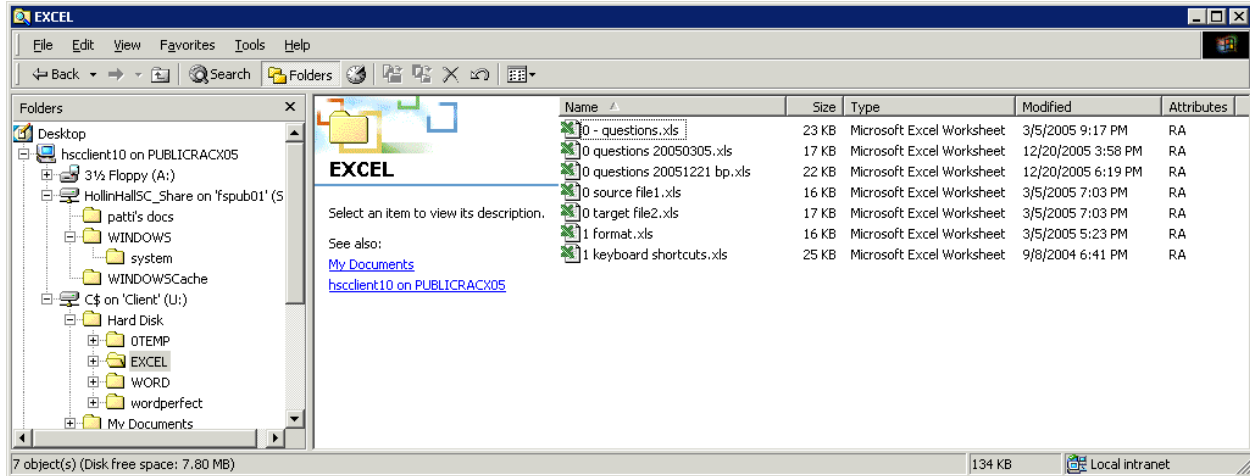
1st File Name: 3hh computer club.doc Why was it made Read Only?

2nd File Name: 3hh computer club 20060602.doc Why was it made Read Only?

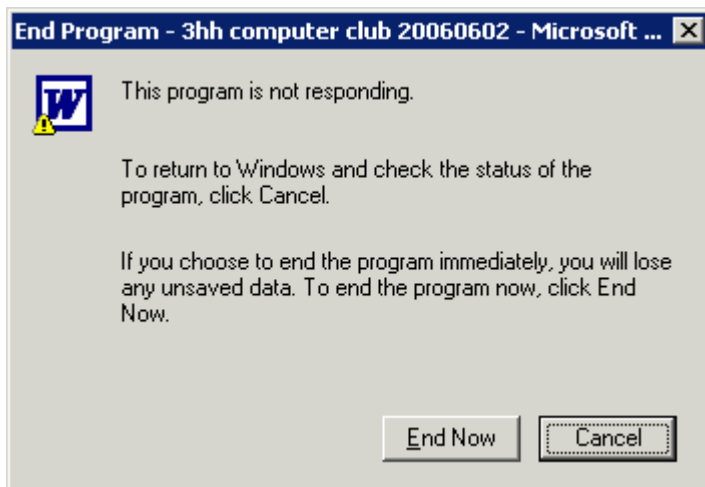
3rd File Name: 3hh computer club 20060602b.doc

Cannot shut down with ALT+F4

Would like this window look like Windows Explorer or My Computer



How to remove center column EXCEL?



Why did this appear frequently?

All Citrix terminals are **VERY SLOW**