

HOME NETWORKING CLASS SUPPORT PAGE

INTERNET SERVICE PROVIDERS [ISP] WIDE AREA NETWORK [WAN]

DSL Verizon & CavTel FIOS - Verizon
Broadband Cable Cox Mobile Broadband Sprint

MODEMS [modulator demodulator]

Provides the interface between the above services and your home network [or single computer] typically via an Ethernet or USB connector In some ways similar to a radio

ROUTERS

Allows multiple computers to share resources and to share the connection to the internet. Every computer can see and use the storage devices on other computers. Allows file back-up to old computers and allows new computers to read

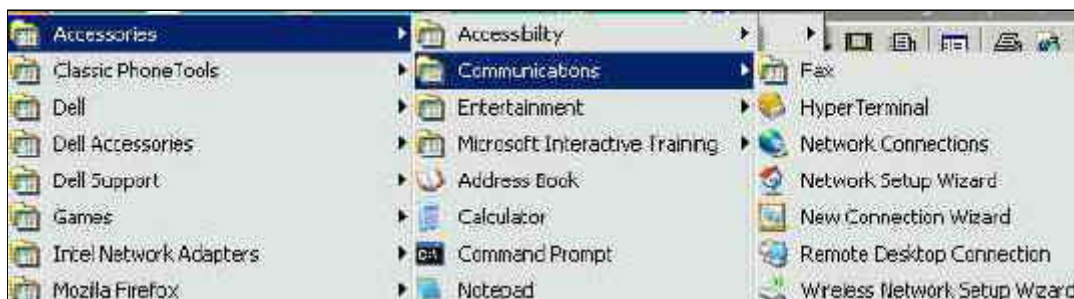
Brands - Linksys & Netgear (most supported)
Wired or Wireless
Router Configuration and Setup

NETWORK PERIPHERALS (devices connected to router)

Modem	Scanners
Computers (of course)	Cameras
Printers (with proper interface)	Digital Video Recorders

**** CHART OR DRAWING HOME NETWORK ****

WINDOWS NETWORK CONFIGURATION



Start > Programs > Accessories > **Communications**

Network Connections
Network Setup Wizard
Wireless Network Setup Wizard - **copy passord**

Start > Settings > **Control Panel**

Security Center
Windows Firewall

My Network Places (Should appear on desktop after network setup)

NETWORK HARDWARE SETUP AND TESTING [Using your web browser]

Logon Router > <http://192.168.1.1> EXAMPLE LOGIN

Set login password
Set wireless SSID password - **same as on computer**

BASIC NETWORK TESTING (advanced users)

You'll save time, if before you call Tech Support, you can determine if a problem is with your computer, your modem, your ISP, or if the problem is on the Internet.

Logon Modem > <http://192.168.100.1>

Print Modem '**Status**' '**Signal Address**' pages for future reference

Open a DOS window

Start > Programs > Accessories > MS-DOS Prompt
[Type any of the follow commands in the black window]

ipconfig - show basic connectivity
ping - example ping google.com
tracert {/? at the end of command lists
options. ex ping /? }

To test from outside your own network go to www.traceroute.org

WIDE AREA NETWORK CHART OR DRAWING

When everything is working